



HISTORICAL MONUMENT AND LARGE VINEYARD



WELCOME!

Enjoy an **unforgettable experience** in an exceptional castle, amongst vineyards and share the story of **one same family** for four centuries, History of France, a story of a place full of culture, grandeur and simplicity.

Share your events in a unique place that we preserve for you to feel infinitely good...and share an exceptional lifestyle.

In the heart of our estate, discover the exciting world of vines and wine.

Nicolas and Miren de Lorgeril

A STORY

At the heart of the history and life of **the same family for 4 centuries**, the castle was embellished and increased to throughout the centuries. **Built in 1620** by Bernard De Pennautier, ancestor of Nicolas De Lorgeril, he hosted in 1622 King **Louis XIII** who presented him his sumptuous preserved and classified (Historical Monument) furniture. Pierre Louis de Pennautier his son, powerful and refined, confided to **Le Vau, the architect of Versailles**, the construction of the wings (the Orangery and Louis XIV Gallery) and to **Le Nôtre**, the drawing of the French gardens. Through the History, the estate and the family developed inside **wine culture and excellence**. Today the castle is a **gateway to the French lifestyle**. Completely restored in 2009, protected Historical Monument, it combines the beauty and heritage of the region, the charm of a family home and the modernity of a site suitable for receptions and events and the most memorable stays.



A LISTED SITE

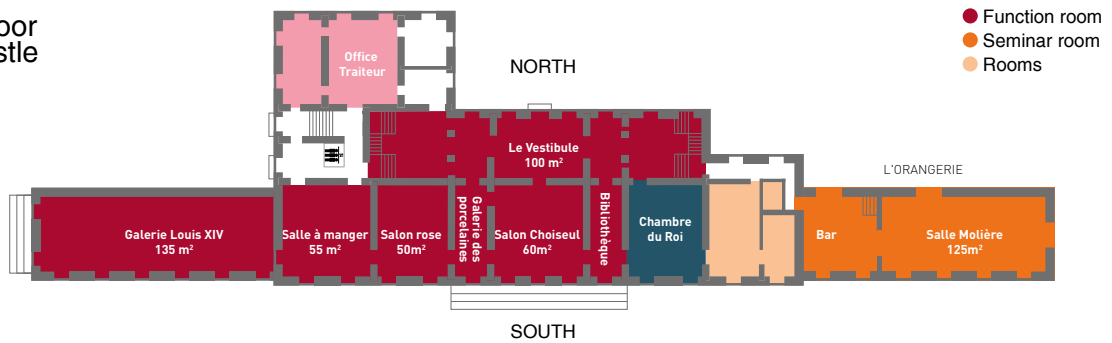
- In a classified site in the heart of a prestigious vineyard estate.
- A family home and place of warmth, friendliness and openness.
- 2 km from Carcassonne, 90 km from Toulouse, 140 km from Montpellier, 300 km from Bordeaux and Barcelona.
- 3 km from 2 UNESCO World Heritage sites a few miles away: the walled city of Carcassonne and the Canal du Midi



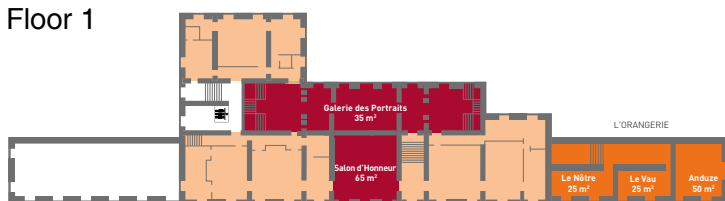
DISCOVER AN ART OF EXCEPTIONAL LIVING

A GREAT CHOICE OF ROOMS WITH CHARACTER

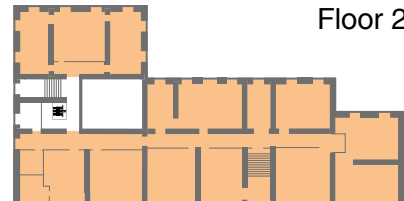
Ground floor of the Castle








Floor 1



Floor 2



A PRESTIGIOUS PLACE FOR YOUR EVENTS

| CAPACITY OF RECEPTION AND MEAL | | M2 |  |  |  |  |  |
|--------------------------------|--|----------|---|---|---|---|---|
| Orangerie | Seminar room Molière | 125 | 110 | 40 | 45 | 140 | 96 |
| | Seminar room Anduze | 50 | 50 | 20 | 25 | | |
| | Seminar room Le Nôtre | 25 | 25 | 14 | 12 | | |
| | Seminar room Le Vau | 25 | 25 | 14 | 12 | | |
| Castle | Gallery Louis XIV | 135 | 190 | - | - | 250 | 155 |
| | Dining room (opened on the Louis XIV Gallery)) | 55 | 50 | 25 | 30 | 70 | 50 |
| | Salon Choiseul* | 60 | - | - | - | 70 | 50 |
| | Vestibule (opened on the salon Choiseul) | 100 | - | - | - | 100 | - |
| | Salon d'honneur | 65 | - | - | - | 50 | 40 |
| | Portrait gallery (opened on the salon d'honneur) | 35 | 25 | - | - | 45 | 25 |
| | 5 function rooms | 25 to 55 | 6 to 50 | 6 to 20 | 6 to 25 | | |
| Cellar | Seminar room Alain de Lorgueil | 45 | 48 | 22 | 24 | 50 | - |
| | Restaurant "La Table-Cave" | | | | | 250 | 200 |

Rooms equiped for working: furniture, screen, video, sound system (depends on formula), paper-board, pencils, water and wifi (except room Alain de Lorgueil). **Function room:** furniture up to 120 people. Other furniture on request.

ENJOY THE CHATEAU LIFE

ACCOMMODATION CAPACITY: BEDROOMS AND GUEST HOUSES

| Place | Single rooms | Double rooms | Twin rooms | Suites | Total rooms | Nbr of pers. | |
|---------------|---------------------|--------------|------------|--------|-------------|--------------|----|
| In the Castle | Rooms 4* | 1 | 11 | 8 | 2 | 44 | |
| | Rooms 2* | 2 | - | - | - | 2 | |
| | Maison du jardinier | 2 | - | 1 | - | 3 | 4 |
| Far from 2km | Domaine de Garille | - | 3 | 18 | - | 21 | 44 |
| Total | | | | | 48 | 94 | |



The rooms in the castle are air-conditioned, furnished and decorated in harmony with the castle and serviced by a lift. At your disposal, sitting rooms, mini-bar and swimming pool in season accessible to residents (excluding reception hours). **Booking from minimum 4 bedrooms.**

Maison du jardinier: in the garden

Domaine de Garille: 2 km from the castle, accessible by Shuttle, 7 guest houses that can accommodate up to 55 persons. Additional rooms through our partnerships with the **hotels in Carcassonne** (100 rooms ****), 3 km, by shuttle.



BROADEN YOUR VIEW, THE SPOT IS YOURS

WINE TOURISM AND ENTERTAINMENT

At the heart of vineyards and remarkable landscapes, pioneered hospitality for 15 years, **the estate is rich in tourism, original and unique in France**: all things are possible to allow the visitor to understand, discover, love and share the passion of the world of the vines and the wine.

Discovery of the vineyards, trails (discovery of the grape varieties), Experimentation in art of wine. Cellar visit, tasting classes with a large variety of themes: chocolate, cheese, etc.

Gastronomy: Restaurant on site, cooking classes and collaboration with 6 starred chefs.

Entertainment and organized events as celebrations, team building or incentive, everything is possible:

- Games, challenges, hiking, quad, mountain bike, 2CV, horse, etc,
- Shows, private concerts, artistic experimentation with our partners,
- Art classes of French living.

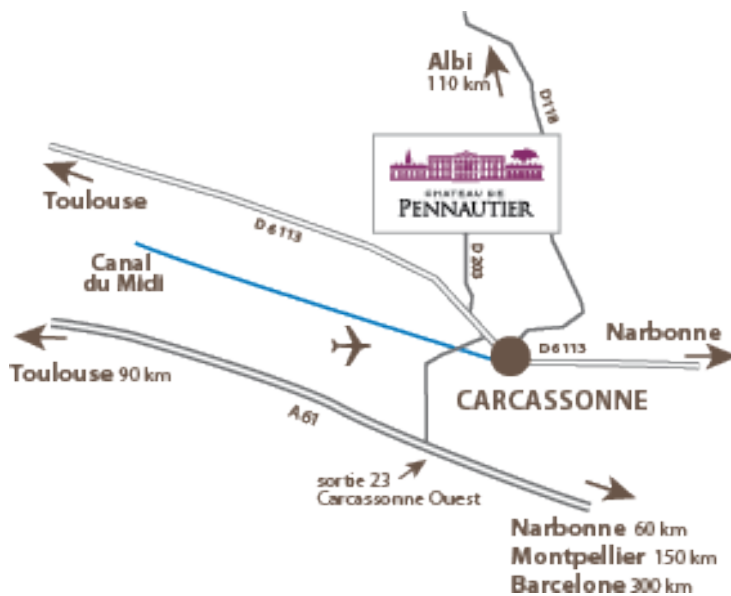
HERITAGE

In the heart of a heritage site and region, a large choice of activities is available:

- In the castle: historical guided visits of the building (Historic Monument), art collections, visit of the classified garden,
- 2 UNESCO World Heritage sites a few miles away: the walled city of Carcassonne and the Canal du Midi



AN ACCESSIBLE SITE



- ✈ 5 km and 90 km
- 🚆 TGV 3 km
- ♿ On the spot



Lorgeril
1620
Maison & Domaines

Contact:
contact@chateaupennautier.com
Château de Pennautier 11610 Pennautier
Tel.: +33 (0)4 68 72 76 96 - +33 (0)6 19 86 34 64
www.chateaupennautier.com